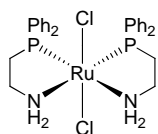
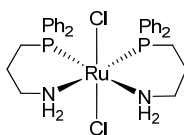


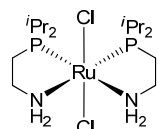
Ruthenium Aminophosphine Catalysts



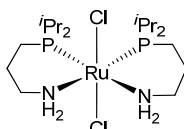
KP44-100001
RuCl₂(PGly)₂
Dichlorobis(2-(diphenylphosphino)ethyl-amine)ruthenium(II), ≥97.0%
 C₂₈H₃₂Cl₂N₂P₂Ru; F.W: 630.49
 [506417-41-0]



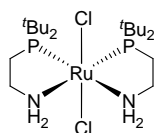
KP44-100124
Dichlorobis(3-(diphenylphosphino)propyl-amine)ruthenium(II), ≥97.0%
 C₃₀H₃₆Cl₂N₂P₂Ru; F.W: 658.54
 [911128-25-1]



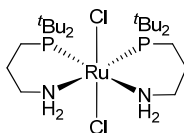
KP44-100002
Dichlorobis(2-(diisopropylphosphino)ethyl-amine)ruthenium(II), ≥97.0%
 C₁₆H₄₀Cl₂N₂P₂Ru; F.W: 494.43
 [1092372-90-1]



KP44-100125
Dichlorobis(3-(diisopropylphosphino)-propylamine)ruthenium(II), ≥97.0%
 C₁₈H₄₄Cl₂N₂P₂Ru; F.W: 522.48



KP44-100003
Dichlorobis(2-(di-tert-butylphosphino)-ethylamine)ruthenium(II), ≥97.0%
 C₂₀H₄₈Cl₂N₂P₂Ru; F.W: 550.53
 [1092372-91-2]



KP44-100122
Dichlorobis(3-(di-tert-butylphosphino)-propylamine)ruthenium(II), ≥97.0%
 C₂₂H₅₂Cl₂N₂P₂Ru; F.W: 578.58