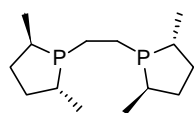
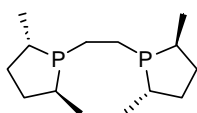


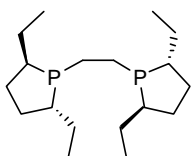
BPE Phospholane Ligands



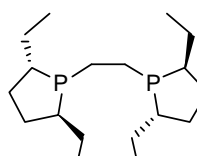
KP15-100028
(R,R)-Me-BPE™, ≥97.0%
(+)-1,2-Bis((2R,5R)-2,5-dimethylphospholano)ethane
 $C_{14}H_{28}P_2$; F.W: 258.32; [129648-07-3]



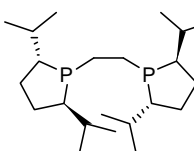
KP15-100029
(S,S)-Me-BPE™, ≥97.0%
(-)-1,2-Bis((2S,5S)-2,5-dimethylphospholano)ethane
 $C_{14}H_{28}P_2$; F.W: 258.32; [136779-26-5]



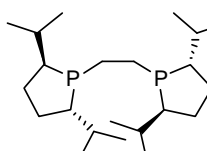
KP15-100034
(R,R)-Et-BPE™, ≥97.0%
(+)-1,2-Bis((2R,5R)-2,5-diethylphospholano)ethane
 $C_{18}H_{36}P_2$; F.W: 314.43; [136705-62-9]



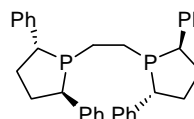
KP15-100035
(S,S)-Et-BPE™, ≥97.0%
(-)-1,2-Bis((2S,5S)-2,5-diethylphospholano)ethane
 $C_{18}H_{36}P_2$; F.W: 314.43; [136779-27-6]



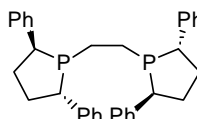
KP15-100037
(R,R)-iPr-BPE™, ≥97.0%
1,2-Bis((2R,5R)-2,5-diisopropylphospholano)ethane
 $C_{22}H_{44}P_2$; F.W: 370.53; [136705-63-0]



KP15-100036
(S,S)-iPr-BPE™, ≥97.0%
1,2-Bis((2S,5S)-2,5-diisopropylphospholano)ethane
 $C_{22}H_{44}P_2$; F.W: 370.53; [528854-34-4]

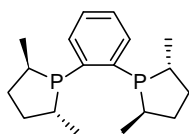


KP15-100048
(R,R)-Ph-BPE™, ≥97.0%
(-)-1,2-Bis((2R,5R)-2,5-diphenylphospholano)ethane
 $C_{34}H_{36}P_2$; F.W: 506.0; [528565-79-9]

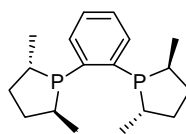


KP15-100049
(S,S)-Ph-BPE™, ≥97.0%
(+)-1,2-Bis((2S,5S)-2,5-diphenylphospholano)ethane
 $C_{34}H_{36}P_2$; F.W: 506.0; [824395-67-7]

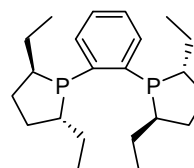
DuPhos Phospholane Ligands



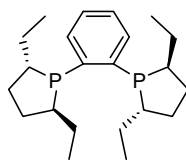
KP15-100024
(R,R)-Me-DuPhos™, ≥97.0%
(-)-1,2-Bis((2R,5R)-2,5-dimethylphospholano)benzene
 $C_{18}H_{28}P_2$; F.W: 306.3; [147253-67-6]



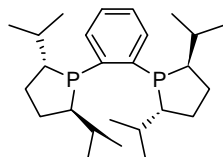
KP15-100025
(S,S)-Me-DuPhos™, ≥97.0%
(+)-1,2-Bis((2S,5S)-2,5-dimethylphospholano)benzene
 $C_{18}H_{28}P_2$; F.W: 306.3; [136735-95-0]



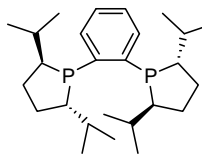
KP15-100030
(R,R)-Et-DuPhos™, ≥97.0%
(-)-1,2-Bis((2R,5R)-2,5-diethylphospholano)benzene
 $C_{22}H_{36}P_2$; F.W: 362.5; [136705-64-1]



KP15-100031
(S,S)-Et-DuPhos™, ≥97.0%
(+)-1,2-Bis((2S,5S)-2,5-diethylphospholano)benzene
 $C_{22}H_{36}P_2$; F.W: 362.5; [136779-28-7]



KP15-100033
(R,R)-iPr-DuPhos™, ≥97.0%
(+)-1,2-Bis((2R,5R)-2,5-diisopropylphospholano)benzene
 $C_{26}H_{44}P_2$; F.W: 418.6; [136705-65-2]



KP15-100032
(S,S)-iPr-DuPhos™, ≥97.0%
(-)-1,2-Bis((2S,5S)-2,5-diisopropylphospholano)benzene
 $C_{26}H_{44}P_2$; F.W: 418.6; [147253-69-8]