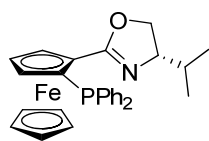
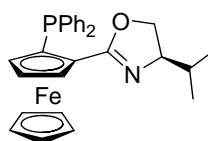


## Phosphinoxazoline Ligands



**KP26-100021**  
**(S,S)-[2-(4'-Isopropoxyloxazolin-2'yl)-ferrocenyl]diphenylphosphine, ≥97.0%**  
C<sub>28</sub>H<sub>28</sub>FeNOP; F.W: 481.35; [163169-29-7]



**KP26-100022**  
**(R,R)-[2-(4'-Isopropoxyloxazolin-2'yl)-ferrocenyl]diphenylphosphine, ≥97.0%**  
C<sub>28</sub>H<sub>28</sub>FeNOP; F.W: 481.35; [541540-70-9]