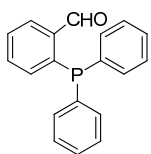
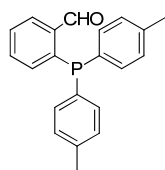


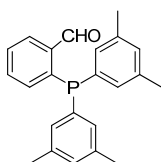
Phosphinobenzaldehydes



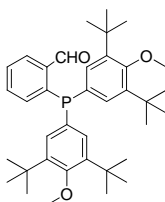
KP15-100057
2-(Diphenylphosphino)benzaldehyde,
≥97.0%
C₁₉H₁₅OP; F.W: 290.30; [50777-69-0]



KP15-100058
2-(Di-p-tolylphosphino)benzaldehyde,
≥97.0%
C₂₁H₁₉OP; F.W: 318.12



KP15-100059
2-(Bis(3,5-dimethylphenyl)phosphino)-
benzaldehyde, ≥97.0%
C₂₃H₂₃OP; F.W: 346.40; [669091-00-3]



KP15-100084
2-(Bis(3,5-di-tert-butyl-4-methoxyphenyl)-
phosphino)benzaldehyde, ≥97.0%
C₃₇H₅₁O₃P; F.W: 574.77