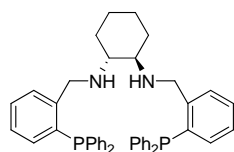
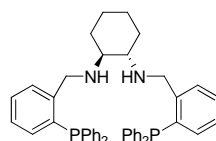


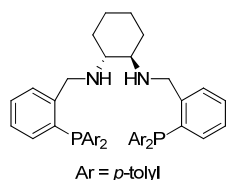
Diaminodiphosphine Ligands



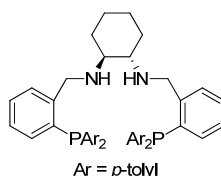
KP15-100026
(1R,2R)-N,N-Bis(2-(diphenylphosphino)-benzyl)cyclohexane-1,2-diamine, ≥97.0%
 $C_{44}H_{44}N_2P_2$; F.W: 662.78; [174758-63-5]



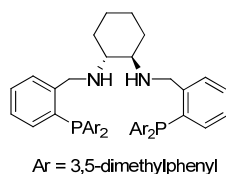
KP15-100027
(1S,2S)-N,N-Bis(2-(diphenylphosphino)-benzyl)cyclohexane-1,2-diamine, ≥97.0%
 $C_{44}H_{44}N_2P_2$; F.W: 662.78; [174677-83-9]



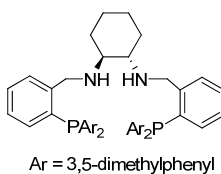
KP15-100088
(1R,2R)-N,N-Bis(2-(di-*p*-tolylphosphino)-benzyl)cyclohexane-1,2-diamine, ≥97.0%
 $C_{48}H_{52}N_2P_2$; F.W: 718.89



KP15-100089
(1S,2S)-N,N-Bis(2-(di-*p*-tolylphosphino)-benzyl)cyclohexane-1,2-diamine, ≥97.0%
 $C_{48}H_{52}N_2P_2$; F.W: 718.89

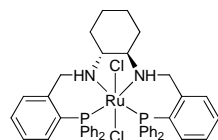


KP15-100090
(1R,2R)-N,N-Bis(2-(bis(3,5-dimethylphenyl)-phosphino)benzyl)cyclohexane-1,2-diamine, ≥97.0%
 $C_{52}H_{60}N_2P_2$; F.W: 774.99

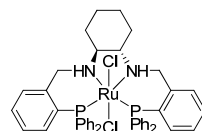


KP15-100091
(1S,2S)-N,N-Bis(2-(bis(3,5-dimethylphenyl)-phosphino)benzyl)cyclohexane-1,2-diamine, ≥97.0%
 $C_{52}H_{60}N_2P_2$; F.W: 774.99

Ruthenium Diaminodiphosphine Catalysts



KP44-100042
Dichloro((1R,2R)-N,N-Bis(2-(diphenylphosphino)benzyl)cyclohexane-1,2-diamine)-ruthenium(II), ≥97.0%
 $C_{44}H_{44}Cl_2N_2P_2Ru$; F.W: 834.76; [429678-11-5]



KP44-100043
Dichloro((1S,2S)-N,N-Bis(2-(diphenylphosphino)benzyl)cyclohexane-1,2-diamine)-ruthenium(II), ≥97.0%
 $C_{44}H_{44}Cl_2N_2P_2Ru$; F.W: 834.76; [302924-37-4]