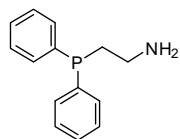
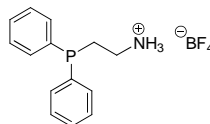


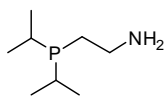
Achiral Aminophosphine Ligands



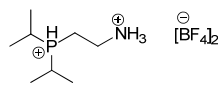
KP15-100001
2-(Diphenylphosphino)ethylamine, ≥97.0%
 $C_{14}H_{16}NP$; F.W: 229.26; [4848-43-5]



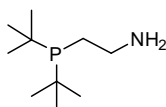
KP15-100151
2-(diphenylphosphino)ethanaminium tetrafluoroborate, ≥97.0%
 $C_{14}H_{17}BF_4NP$; F.W: 317.06



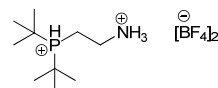
KP15-100002
2-(Diisopropylphosphino)ethylamine, ≥97.0%
 $C_8H_{20}NP$; F.W: 161.22, [1053657-14-9]



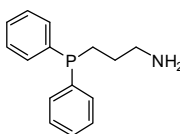
KP15-100153
(2-ammonioethyl)diisopropylphosphonium bis(tetrafluoroborate), ≥97.0%
 $C_8H_{22}B_2F_8NP$; F.W: 336.85



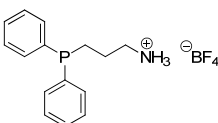
KP15-100003
2-(Di-tert-butylphosphino)ethylamine, ≥97.0%
 $C_{10}H_{24}NP$; F.W: 189.28; [1053658-84-6]



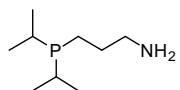
KP15-100155
(2-ammonioethyl)di-tert-butylphosphonium bis(tetrafluoroborate), ≥97.0%
 $C_{10}H_{26}B_2F_8NP$; F.W: 363.89



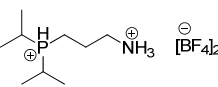
KP15-100054
3-(Diphenylphosphino)propylamine, ≥97.0%
 $C_{15}H_{18}NP$; F.W: 243.28; [16605-03-1]



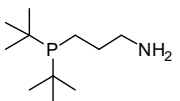
KP15-100156
3-(diphenylphosphino)propan-1-aminium tetrafluoroborate, ≥97.0%
 $C_{15}H_{19}BF_4NP$; F.W: 331.10



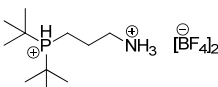
KP15-100055
3-(Diisopropylphosphino)propylamine, ≥97.0%
 $C_9H_{22}NP$; F.W: 175.25



KP15-100158
(3-ammoniopropyl)diisopropylphosphonium bis(tetrafluoroborate), ≥97.0%
 $C_9H_{24}B_2F_8NP$; F.W: 350.88

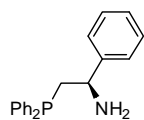


KP15-100056
3-(Di-tert-butylphosphino)propylamine, ≥97.0%
 $C_{11}H_{26}NP$; F.W: 203.30

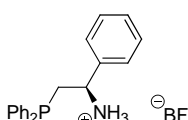


KP15-100160
(3-ammoniopropyl)di-tert-butylphosphonium bis(tetrafluoroborate), ≥97.0%
 $C_{11}H_{27}B_2F_8NP$; F.W: 377.92

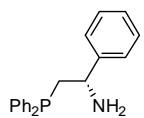
Chiral Aminophosphine Ligands



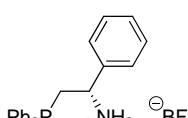
KP15-100077
(-)-(R)-2-(diphenylphosphino)-1-phenylethanamine, ≥97.0%
 $C_{26}H_{24}NP$; F.W: 305.35; [141096-35-7]



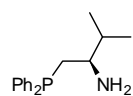
KP15-100149
(R)-2-(diphenylphosphino)-1-phenylethanaminium tetrafluoroborate, ≥97.0%
 $C_{20}H_{21}BF_4NP$; F.W: 393.16



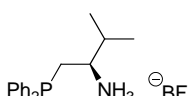
KP15-100078
(+)-(S)-2-(diphenylphosphino)-1-phenylethanamine, ≥97.0%
 $C_{26}H_{24}NP$; F.W: 305.35; [1103533-85-2]



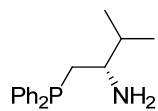
KP15-100150
(S)-2-(diphenylphosphino)-1-phenylethanaminium tetrafluoroborate, ≥97.0%
 $C_{20}H_{21}BF_4NP$; F.W: 393.16



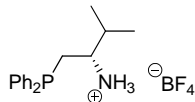
KP15-100129
(R)-1-(diphenylphosphino)-3-methylbutan-2-amine, ≥97.0%
 $C_{17}H_{22}NP$; F.W: 271.34



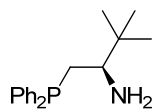
KP15-100169
(R)-1-(diphenylphosphino)-3-methylbutan-2-aminium tetrafluoroborate, ≥97.0%
 $C_{17}H_{23}BF_4NP$; F.W: 359.15



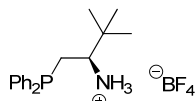
KP15-100130
(S)-1-(diphenylphosphino)-3-methylbutan-2-amine, ≥97.0%
C₁₇H₂₂NP; F.W: 271.34; [146476-37-1]



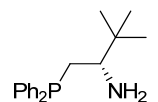
KP15-100170
(S)-1-(diphenylphosphino)-3-methylbutan-2-aminium tetrafluoroborate, ≥97.0%
C₁₇H₂₃BF₄NP; F.W: 359.15



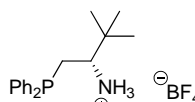
KP15-100131
(R)-1-(diphenylphosphino)-3,3-dimethylbutan-2-amine, ≥97.0%
C₁₈H₂₄NP; F.W: 285.36



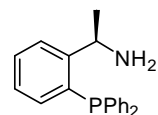
KP15-100171
(R)-1-(diphenylphosphino)-3,3-dimethylbutan-2-aminium tetrafluoroborate, ≥97.0%
C₁₈H₂₅BF₄NP; F.W: 373.18



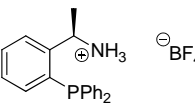
KP15-100132
(S)-1-(diphenylphosphino)-3,3-dimethylbutan-2-amine, ≥97.0%
C₁₈H₂₄NP; F.W: 285.36; [286454-86-2]



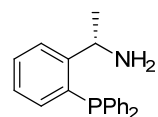
KP15-100172
(S)-1-(diphenylphosphino)-3,3-dimethylbutan-2-aminium tetrafluoroborate, ≥97.0%
C₁₈H₂₅BF₄NP; F.W: 373.18



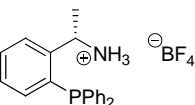
KP15-100075
(R)-1-(2-(diphenylphosphino)phenyl)ethanamine, ≥97.0%
C₂₀H₂₀NP; F.W: 305.35; [192057-60-6]



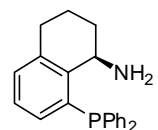
KP15-100147
(R)-1-(2-(diphenylphosphino)phenyl)ethanaminium tetrafluoroborate, ≥97.0%
C₂₀H₂₁BF₄NP; F.W: 393.16



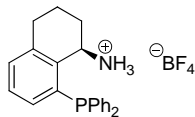
KP15-100076
(S)-1-(2-(diphenylphosphino)phenyl)ethanamine, ≥97.0%
C₂₀H₂₀NP; F.W: 305.35; [913196-43-7]



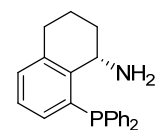
KP15-100148
(S)-1-(2-(diphenylphosphino)phenyl)ethanaminium tetrafluoroborate, ≥97.0%
C₂₀H₂₁BF₄NP; F.W: 393.16



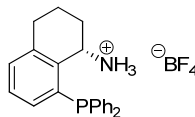
KP15-100127
(R)-8-(diphenylphosphino)-1,2,3,4-tetrahydronaphthalen-1-amine, ≥97.0%
C₂₂H₂₂NP; F.W: 331.39; [960128-64-7]



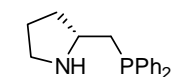
KP15-100167
(R)-8-(diphenylphosphino)-1,2,3,4-tetrahydronaphthalen-1-aminium tetrafluoroborate, ≥97.0%
C₂₂H₃₁BF₄NP; F.W: 419.20



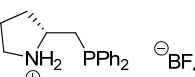
KP15-100128
(S)-8-(diphenylphosphino)-1,2,3,4-tetrahydronaphthalen-1-amine, ≥97.0%
C₂₂H₂₂NP; F.W: 331.39



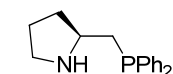
KP15-100168
(S)-8-(diphenylphosphino)-1,2,3,4-tetrahydronaphthalen-1-aminium tetrafluoroborate, ≥97.0%
C₂₂H₃₁BF₄NP; F.W: 419.20



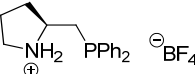
KP15-100095
(R)-2-((diphenylphosphino)methyl)pyrrolidine, ≥97.0%
C₁₇H₂₀NP; F.W: 269.32; [428514-91-4]



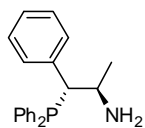
KP15-100145
(R)-2-((diphenylphosphino)methyl)pyrrolidinium tetrafluoroborate, ≥97.0%
C₁₇H₂₁BF₄NP; F.W: 357.13



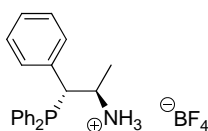
KP15-100096
(S)-2-((diphenylphosphino)methyl)pyrrolidine, ≥97.0%
C₁₇H₂₀NP; F.W: 269.32; [60261-46-3]



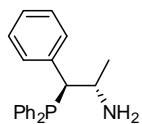
KP15-100146
(S)-2-((diphenylphosphino)methyl)pyrrolidinium tetrafluoroborate, ≥97.0%
C₁₇H₂₁BF₄NP; F.W: 357.13



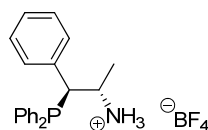
KP15-100004
(-)-(1R,2R)-2-Amino-1-phenylpropylidiphenylphosphine, ≥97.0%
C₂₁H₂₂NP; F.W: 319.38; [799297-44-2]



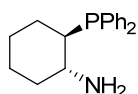
KP15-100141
(1R,2R)-1-(diphenylphosphino)-1-phenylpropan-2-aminium tetrafluoroborate, ≥97.0%
C₂₁H₂₃BF₄NP; F.W: 407.19



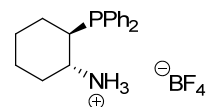
KP15-100005
(+)-(1S,2S)-2-Amino-1-phenylpropylidiphenylphosphine, ≥97.0%
C₂₁H₂₂NP; F.W: 319.38; [341968-71-6]



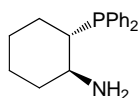
KP15-100142
(1S,2S)-1-(diphenylphosphino)-1-phenylpropan-2-aminium tetrafluoroborate, ≥97.0%
C₂₁H₂₃BF₄NP; F.W: 407.19



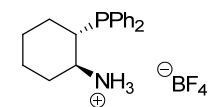
KP15-100137
(1R,2R)-2-(diphenylphosphino)cyclohexanamine, ≥97.0%
C₁₈H₂₂NP; F.W: 283.35; [452304-59-5]



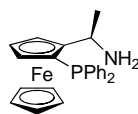
KP15-100173
(1R,2R)-2-(diphenylphosphino)cyclohexanaminium tetrafluoroborate, ≥97.0%
C₁₈H₂₃BF₄NP; F.W: 371.16



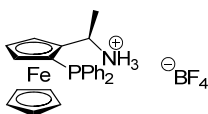
KP15-100138
(1S,2S)-2-(diphenylphosphino)cyclohexanamine, ≥97.0%
C₁₈H₂₂NP; F.W: 283.35; [452304-63-1]



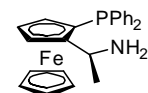
KP15-100174
(1S,2S)-2-(diphenylphosphino)cyclohexanaminium tetrafluoroborate, ≥97.0%
C₁₈H₂₃BF₄NP; F.W: 371.16



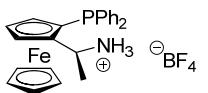
KP26-100011
(R)-1-((S)-2-Diphenylphosphino)ferrocenylethylamine, ≥97.0%
C₂₄H₂₄FeNP; F.W: 413.27



KP26-100023
(R)-1-((S)-2-Diphenylphosphino)ferrocenylethylaminium tetrafluoroborate, ≥97.0%
C₂₄H₂₅BF₄FeNP; F.W: 501.08



KP26-100012
(S)-1-((R)-2-Diphenylphosphino)ferrocenylethylamine, ≥97.0%
C₂₄H₂₄FeNP; F.W: 413.27; [607389-84-4]



KP26-100024
(S)-1-((R)-2-Diphenylphosphino)ferrocenylethylaminium tetrafluoroborate, ≥97.0%
C₂₄H₂₅BF₄FeNP; F.W: 501.08