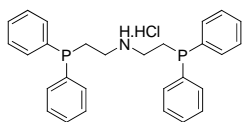
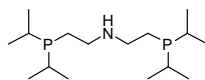


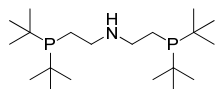
## Aminodiphosphine Ligands and Catalysts



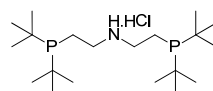
**KP15-100016**  
**Bis((2-diphenylphosphino)ethyl)ammonium chloride,  $\geq 97.0\%$**   
 $C_{28}H_{30}ClNP_2$ ; F.W: 477.95; [66534-97-2]



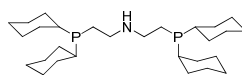
**KP15-100017**  
**Bis((2-diisopropylphosphino)ethyl)amine,  $\geq 97.0\%$**   
 $C_{16}H_{37}NP_2$ ; F.W: 305.42; [131890-26-1]



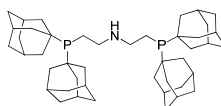
**KP15-100134**  
**Bis(2-(di-tert-butylphosphino)ethyl)amine,  $\geq 97.0\%$**   
 $C_{20}H_{45}NP_2$ ; F.W: 361.53; [944710-34-3]



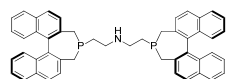
**KP15-100191**  
**Bis(2-(di-tert-butylphosphino)ethyl)ammonium chloride,  $\geq 97.0\%$**   
 $C_{20}H_{46}ClNP_2$ ; F.W: 397.99; [1326805-03-1]



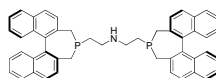
**KP15-100135**  
**Bis(2-(dicyclohexylphosphino)ethyl)amine,  $\geq 97.0\%$**   
 $C_{28}H_{53}NP_2$ ; F.W: 465.67; [550373-32-5]



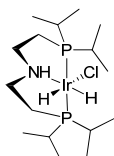
**KP15-100136**  
**Bis(2-(diadamantylphosphino)ethyl)amine,  $\geq 97.0\%$**   
 $C_{44}H_{69}NP_2$ ; F.W: 673.97; [1086138-36-4]



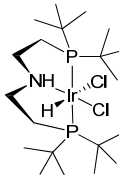
**KP15-100020**  
**Bis(2-((11bR)-3H-binaphtho[2,1-c:1',2'-e]-phosphepin-4(5H)-yl)ethyl)amine,  $\geq 97.0\%$**   
 $C_{48}H_{41}NP_2$ ; F.W: 693.79; [851870-89-8]



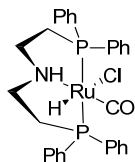
**KP15-100021**  
**Bis(2-((11bS)-3H-binaphtho[2,1-c:1',2'-e]-phosphepin-4(5H)-yl)ethyl)amine,  $\geq 97.0\%$**   
 $C_{48}H_{41}NP_2$ ; F.W: 693.79



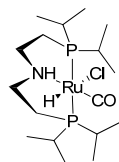
**KP77-100001**  
**Chlorodihydrido(bis((2-diisopropylphosphino)ethyl)amine)iridium(III),  $\geq 97.0\%$**   
 $C_{16}H_{39}ClIrNP_2$ ; F.W: 535.10; [791629-96-4]



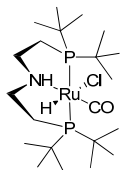
**KP77-100005**  
**Dichlorohydrido(bis((2-di-tert-butylphosphino)ethyl)amine)iridium(III),  $\geq 97.0\%$**   
 $C_{20}H_{46}Cl_2IrNP_2$ ; F.W: 625.66; [1260223-39-9]



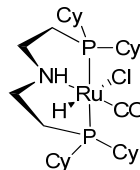
**KP44-100171**  
**Carbonylchlorohydrido(bis((2-diphenylphosphino)ethyl)amine)ruthenium(II),  $\geq 97.0\%$**   
 $C_{29}H_{30}ClINOP_2Ru$ ; F.W: 607.03; [1295649-40-9]



**KP44-100172**  
**Carbonylchlorohydrido(bis((2-diisopropylphosphino)ethyl)amine)ruthenium(II),  $\geq 97.0\%$**   
 $C_{17}H_{39}ClINOP_2Ru$ ; F.W: 471.97; [1311164-69-8]



**KP44-100173**  
**Carbonylchlorohydrido(bis((2-di-tert-butylphosphino)ethyl)amine)ruthenium(II),  $\geq 97.0\%$**   
 $C_{21}H_{46}ClINOP_2Ru$ ; F.W: 527.07; [1421060-10-7]



**KP44-100174**  
**Carbonylchlorohydrido(bis((2-dicyclohexylphosphino)ethyl)amine)ruthenium(II),  $\geq 97.0\%$**   
 $C_{29}H_{55}ClINOP_2Ru$ ; F.W: 632.22; [1421060-11-8]